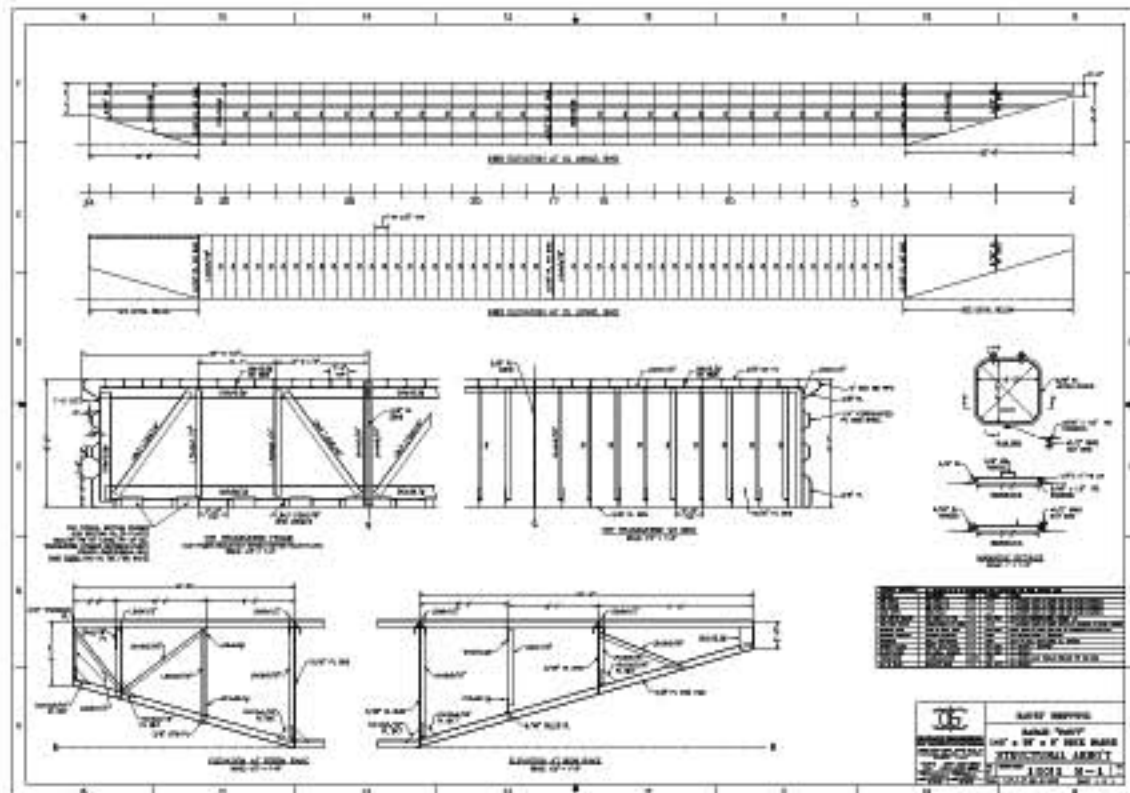
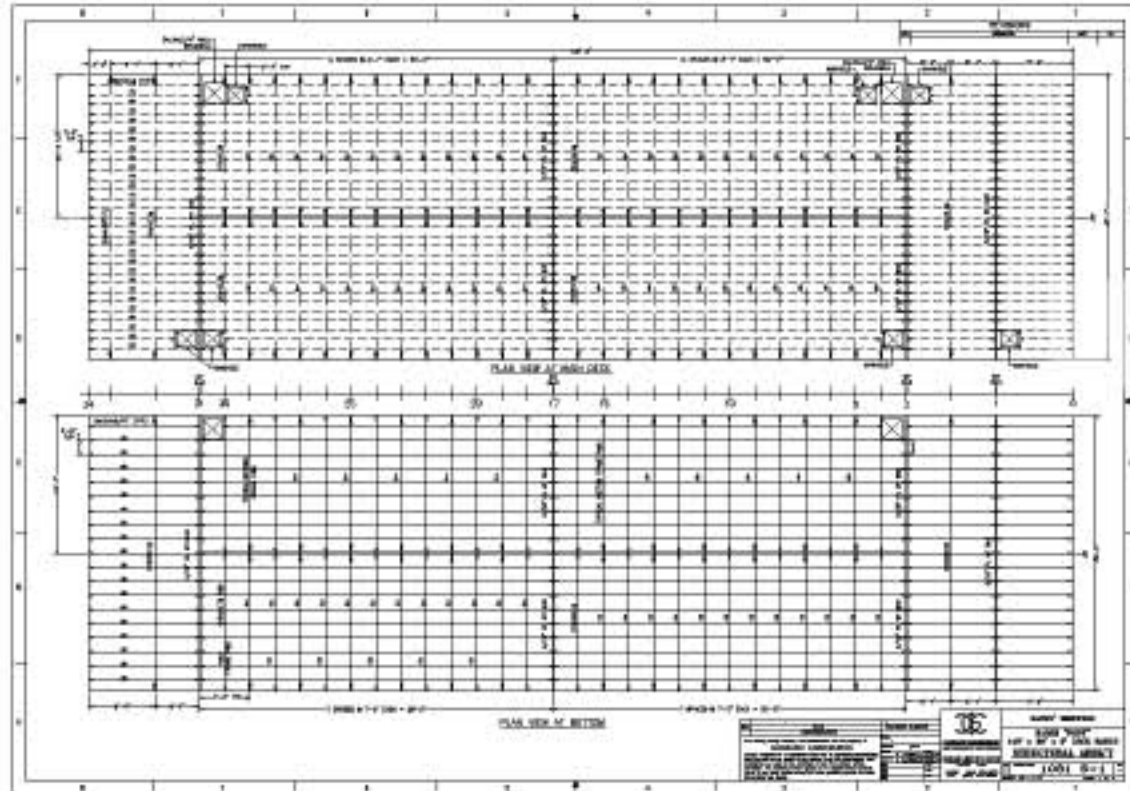


140 x 40 x 9 U.S. DECK BARGE FOR SALE/CHARTER



Completely Re-built 2012

BUILDER :	ADC	PID :	1033	ENG INIT :	ATH
HULL # :	Porta	DATE :	24-Aug-12	UNITS :	US

2.1 LENGTH	Total length @ 85% Dwl, L ₈₅ =	140.23	FT
	Rule Length, L =	134.64	FT

2.3 BREADTH	Greatest molded breadth, B =	39.25	FT
-------------	------------------------------	-------	----

2.5 DEPTH	Molded Depth at side @ MIDships, D _m =	9.00	FT
	Molded Depth used in rule Length, D _r =	7.65	FT

2.7 DRAFT	Molded draft from molded BL to summer load line, d _m =	9.00	FT
-----------	---	------	----

2.11 FREEBOARD DECK	fbd =	9.00	FT
---------------------	-------	------	----

2.27 AMIDSHIPS	MID =	67.32	FT
----------------	-------	-------	----

2.29 BLOCK COEFFICIENT	Volume of molded displacement, V =	30984.00	FT ³
	Block Coefficient if offered, C _b =	1.04	
	Block Coefficient, C _b =	1.04	

2.332.35 YIELD POINT STRENGTH	Yield point, Y =	34000.00	PSI
-------------------------------	------------------	----------	-----

2.43 DEADWEIGHT	Deadweight, DWT =	1248.00	tons
-----------------	-------------------	---------	------

OTHER PARTICULARS	CAMBER =	0.00	IN
	Breadth to Depth Ratio, B/D =	4.30	
	Specific Gravity of water, SG =	1.05	
	Displacement, D =	2327840	LB-S
	Offered uniform deck load, p =	2000.00	PSF

**LOA : 140 FT
BEAM : 40 FT**

