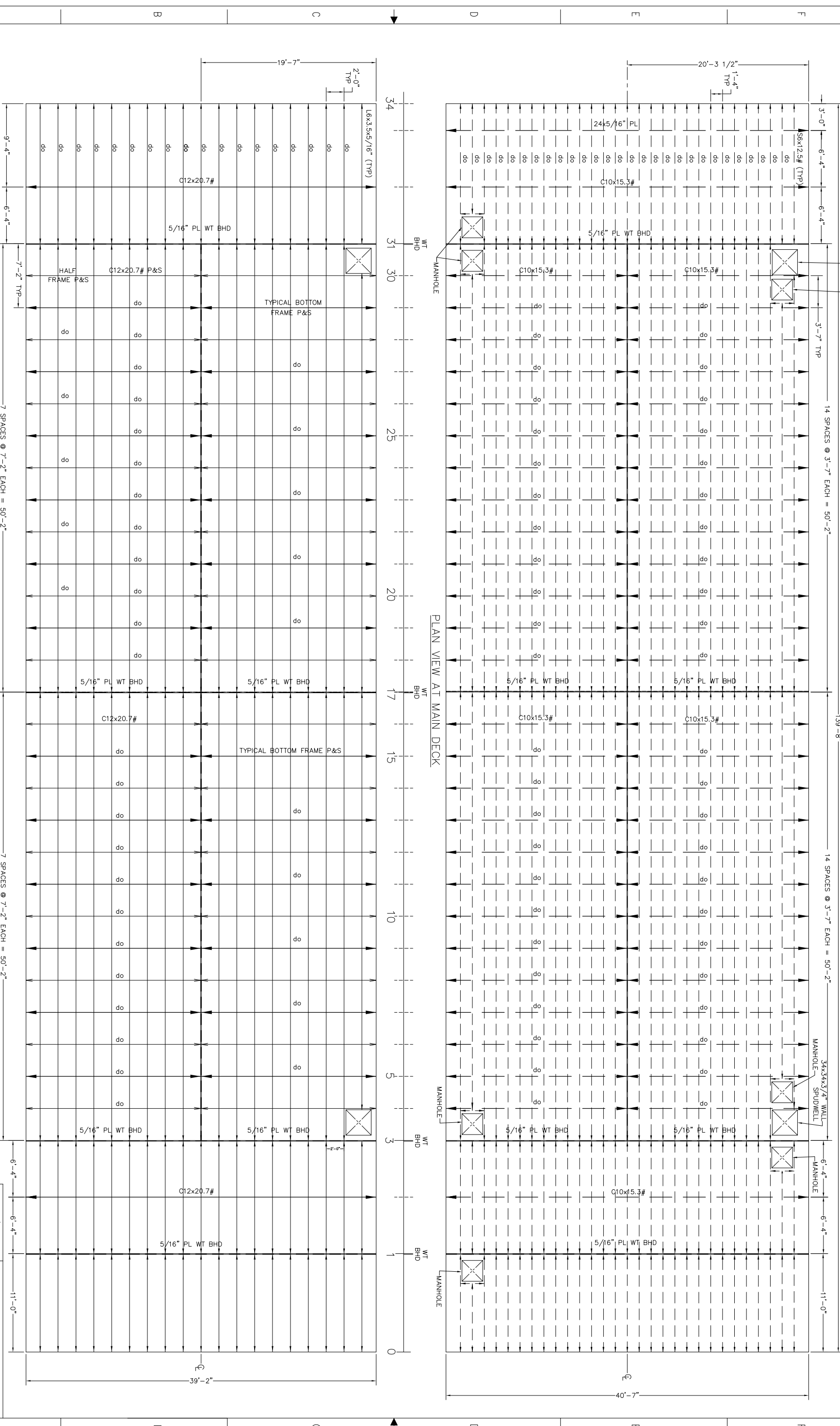


REV	DESCRIPTION	DATE	BY
1			

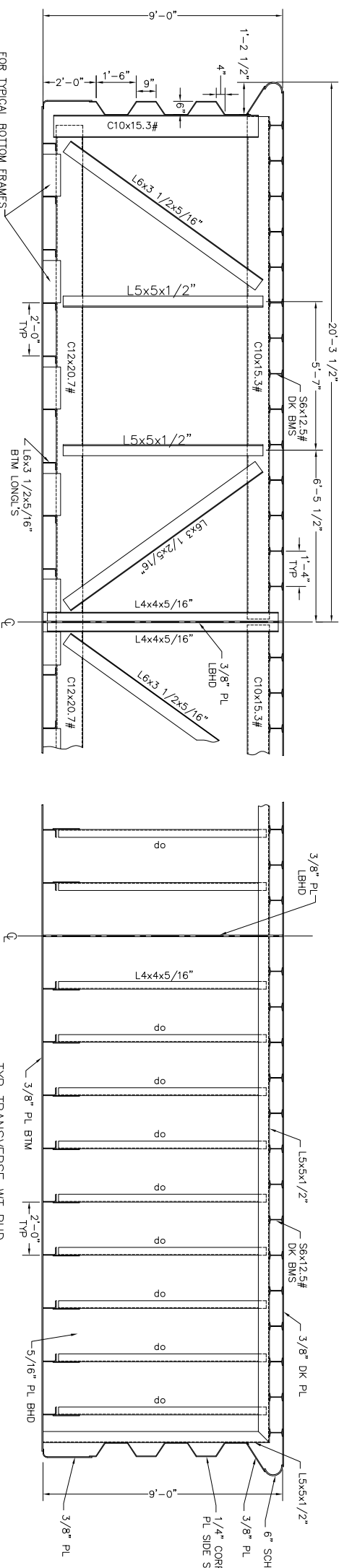
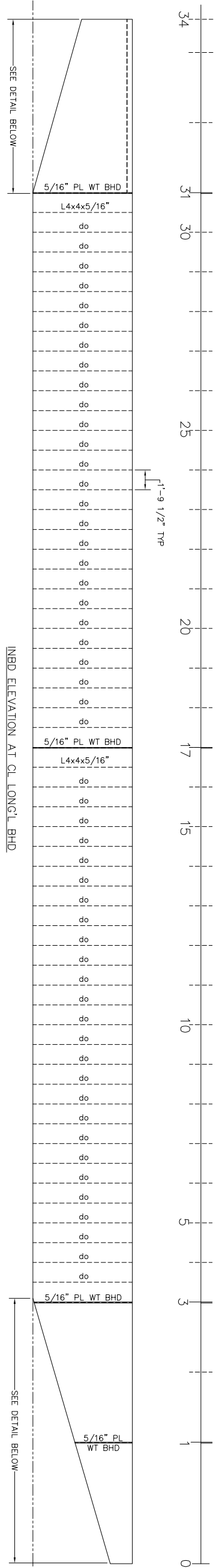
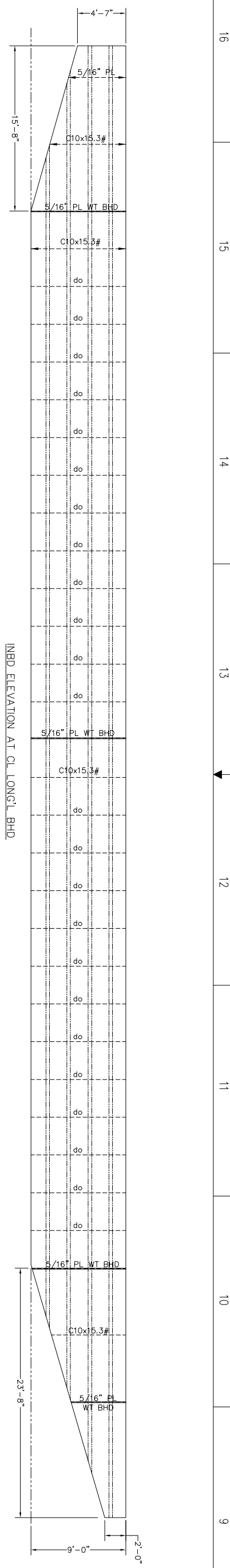
REV	DESCRIPTION	DATE	BY
1			



PLAN VIEW AT BOTTOM

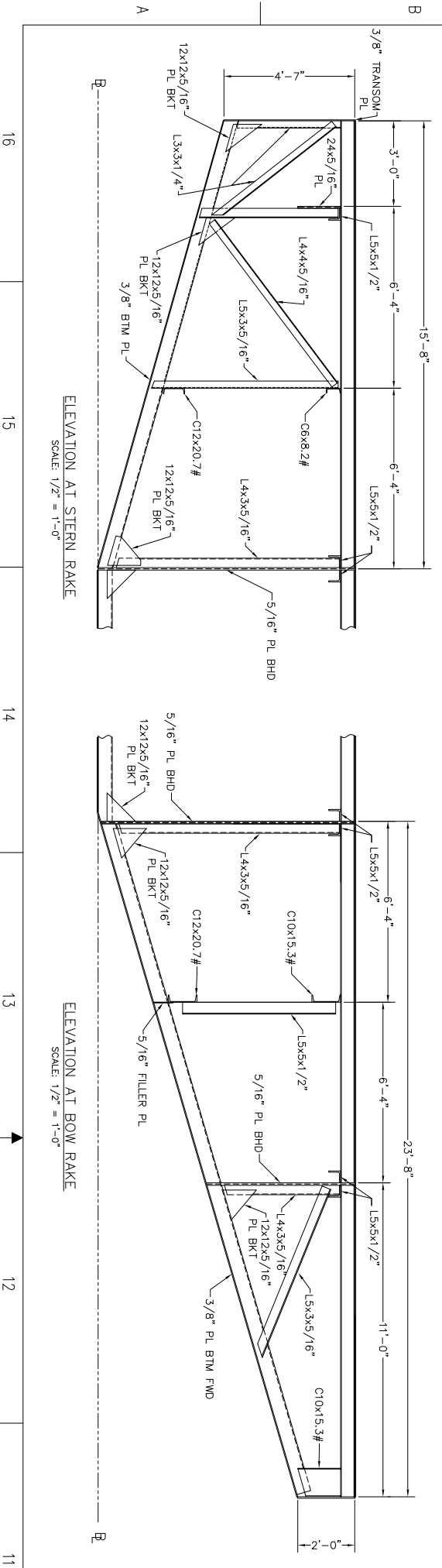
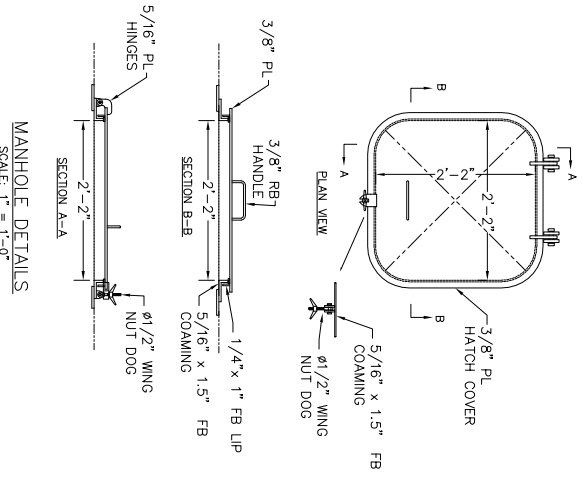
PLAN VIEW AT MAIN DECK

NO.		TITLE	
REFERENCES		DRAWING NUMBER	
<p>This drawing, design concept, and specifications are the property of GLOWACKI ENGINEERING and are furnished on a confidential basis with an expressed understanding that they are not to be reproduced, copied, or transmitted in any form or by any means, electronic or mechanical, including photocopying, recording, or by any information storage and retrieval system, without the prior written permission of GLOWACKI ENGINEERING. The recipient further agrees not to disclose these contents hereof to any other parties except for those specific purposes for which this drawing was issued.</p>			
DESIGNED BY	DATE	CHECKED BY	DATE
DRAWN BY		APPROVED BY	
<p>GLOWACKI ENGINEERING 140' x 39' x 9' DECK BARGE STRUCTURAL ARR'G'T</p>		<p>BARGE "PONT" STRUCTURAL ARR'G'T</p>	
<p>SCALE: 1/4" = 1'-0"</p>		<p>SHEET 1 OF 2</p>	



FOR TYPICAL BOTTOM FRAMES
ADD BOTTOM FILLER PLATES
8x5/16" FB 19" LONG, FIT AT ALL
TRANSVERSE FRAMES BETWEEN EVERY
(AND EXERT BAY IN THE FWD RAKE)

TYP. TRANSVERSE FRAME
HALF FRAMES SIMILAR BUT WITHOUT BOTTOM FILLER PLATES
SCALE: 1/2" = 1'-0"



WELDING SCHEDULE		ALL WELDING TO BE IN ACCORDANCE WITH AISC TABLE FOR STEEL BARRERS, 8808	
REFERENCE	DESCRIPTION	SIZE	POSITION
BHM STIFFERS	BHM SHELL PL.	1/4"	3-11
BHM STIFFERS	SIDE SHELL PL.	1/4"	3-11
DECK STIFFERS	DECK PLATE	1/4"	3-11
BHM STIFFERS/TRANSV	BHM SHELL PL. FWD	1/4"	DEL. CONT.
VERT. BHD STIFFERS	LONG/TRANSV. WT BRGS	1/4"	3-12
CHANNEL OVERLAP	FACE OF STIFFERS	1/4"	DEL. CONT.
CHANNEL OVERLAP	CONTR. WELD ON BEEL AND TOP OF CHANNELS TO STIFFERS	1/4"	DEL. CONT.
FILLER PLATES	STIFFERS BHD'S SHELL	1/4"	DEL. CONT.
STIFFERS/DOORS	BHM SHELL CHANNEL	1/4"	DEL. CONT.
	CHANNELS/STIFFERS	5/16"	DEL. CONT.
	SHELL/WT BRGS	1/4"	DEL. CONT.

GLOWACKI ENGINEERING
 140' x 39' x 9' DECK BARGE
 STRUCTURAL ARRGT
 1031 S-1

SANTE' SHIPPING

PHONE: (904) 278-8870
 32003 FLORIDA
 FLEMING ISLAND, FLORIDA
 FAX: (904) 278-8870
 WWW: www.glowacki.com

DATE: 10/16/09
 SCALE: 1/4"=1'-0" AND AS NOTED
 SHEET: 2 OF 2