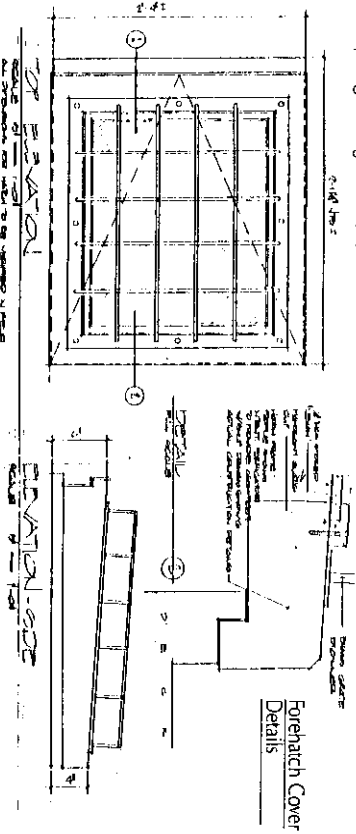




The MV/ERSA is a classic 1929 motor yacht. The yacht was built at the New York Yacht Launch and Engine Company in New York City. The MV/ERSA has undergone extensive renovations for the past four years to refurbish the yacht to its past grandeur and put it in bristol condition while incorporating the most up-to-date conveniences and state of the art technologies.

The purpose of the MV/ERSA is to allow nine individuals the exclusive privilege of ownership in a luxury vintage motor yacht. Vessels of this vintage represent a lifestyle of the past which today very few people have the opportunity to experience. Ownership in the MV/ERSA will allow you to step back in time and experience the elegant and sophisticated lifestyle on the high seas of days gone by.

The MV/ERSA exemplifies all the quality and hand craftsmanship that money could buy during the exciting days of America's first yachting families. Mahogany woods throughout, teak decks, brass hardware and fixtures, marble and sterling silver all come to mind when one considers the regal elegance of MV/ERSA. All of these quality materials have been refurbished to their original state and are now in bristol condition. The restoration of both the exterior and interior recaptures the master shipwright's original vision.

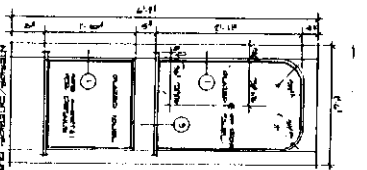


The MV/ERSA's state of the art equipment and facilities allow an owner with a party of six (maximum of eight) the versatility and comfort to choose their own style of vacation. Knowing that the MV/ERSA and her professional crew are capable of responding to any change of pace or circumstance. Cruises can be tailored for pure pleasure and relaxation or for executive business trip. This luxury yacht will allow its owners limitless activities ranging from fishing, diving and trap shooting for the sports enthusiast, to cruising the historical inland waterways of the Eastern U.S coast.

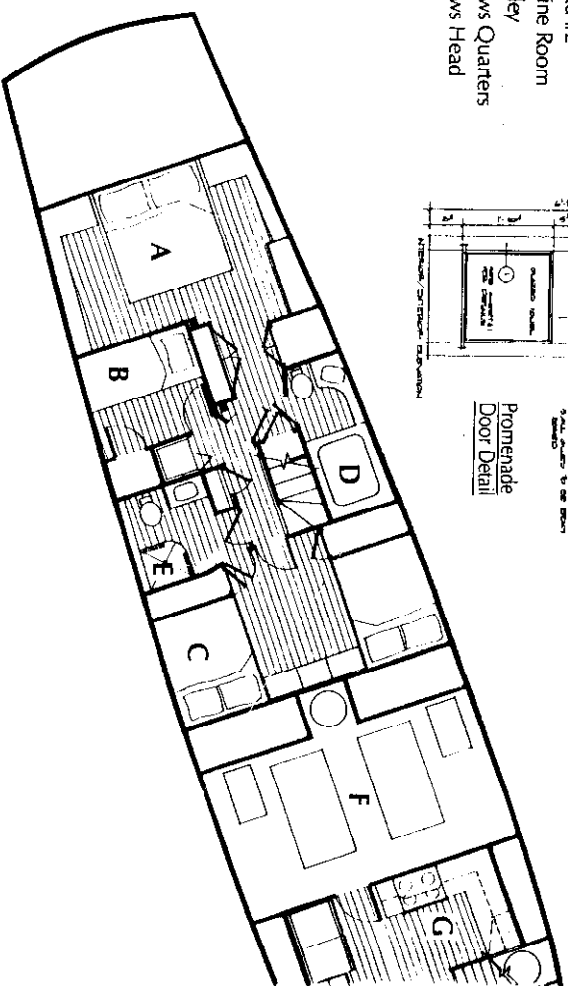
Ship to shore communications allow the owners several options including telephone links through VIF, SSB and cellular connections allowing you to relax in the luxury of this ageless masterpiece with worldwide business and personal contacts only a phone call away.

State of the art audio and video is available in the promenade and the main salon. A complete video and music library will be provided to meet the most varied tastes. Each stateroom will have its own cable ready color television and AM/FM clock radio. The yacht's omni directional satellite dish will beam aboard television programming while at sea or at dockside.

- A Master Stateroom
- B Stateroom #3
- C Stateroom #2
- D Master Head
- E Head #2
- F Engine Room
- G Galley
- H Crews Quarters
- I Crews Head



Promenade Door Detail

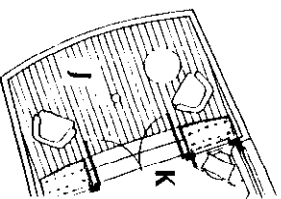


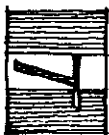
The Captain and his crew of three will navigate the MV/ERSA from the beautifully restored wheelhouse through Coastal Waterways utilizing state of the art electronics. Navigational equipment includes Raytheon Twelve Mile Radar, Furuno Color Video Depth Recorder and Stix Lorain C. The Captain will also have access to the same state of the art ship-to-shore communications equipment mentioned previously.

For your year round comfort the MV/ERSA is equipped with the most modern heating and air conditioning system available. Comfort is assured year round in all public areas of the yacht with individual controls for heating and cooling in each private stateroom.

The promenade will serve as the social and entertainment center of the MV/ERSA. The promenade features built-in seating areas, storage units and wet bar area with refrigerator and ice-maker. Informal dining, sunset cocktails, TV and the highest quality in stereo listening will be features.

The fantail deck will function as an outdoor extension of the promenade functions. The fantail deck will be equipped with two propane grills for outdoor cooking. Just imagine the aroma of freshly caught fish cooking on the grill while cocktails are being served.





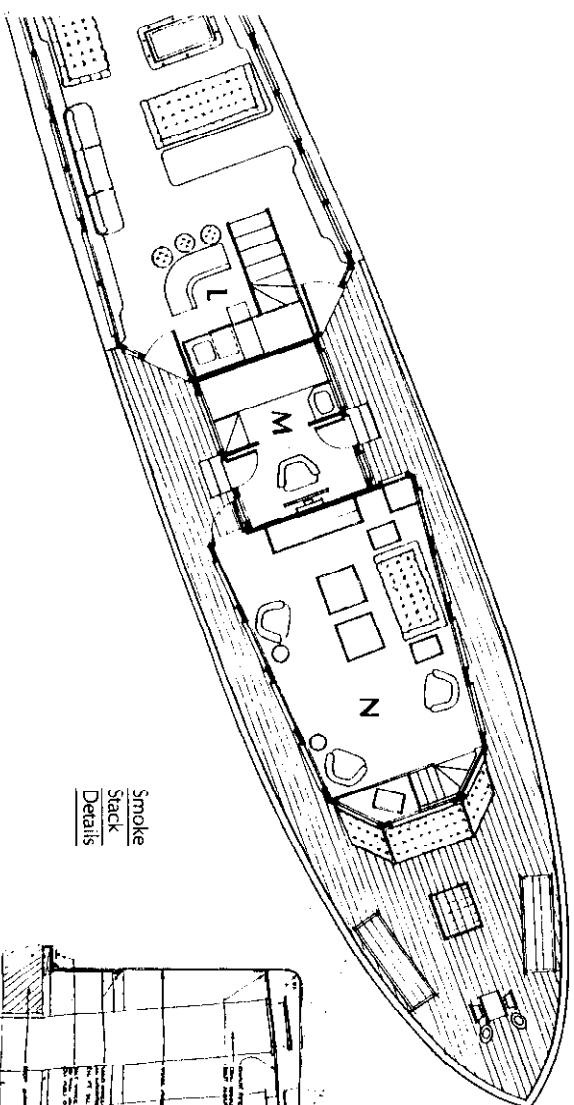
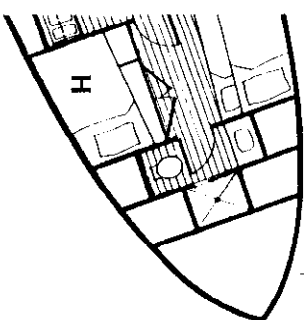
The Master Stateroom features a custom king size bed with beautifully detailed mahogany built-in storage cabinets and wardrobes. Period brass light fixtures and hardware are highlights in this stateroom. The Master Head features a mahogany jacuzzi with mirror surround.

The Guest Stateroom (Number Two) features two double beds and a beautifully restored period chest of drawers with vanity mirror. Each built-in double bed features an abundance of built-in storage below and a wardrobe. Other eye catching features of this fabulous stateroom are clerestory windows and brass ceiling fan with mahogany blades.

Stateroom #3 features a single bed with bunk above. Ample storage and wardrobe are featured in this room as well.

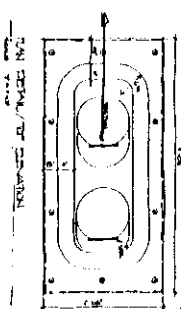
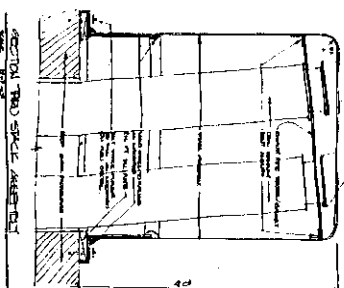
The #2 Head features original brass plumbing fixtures, a shower, a marble vanity top and ceramic tile throughout.

The ship's galley is equipped with the finest brand new kitchen equipment available. Sub-Zero, Hobart and Bakers Pride appliances assure the Ship's Chef the highest quality equipment to produce gourmet menus to suit each owner's discriminating taste.



- J Fantail
- K Promenade
- L Wet Bar
- M Wheelhouse
- N Main Salon

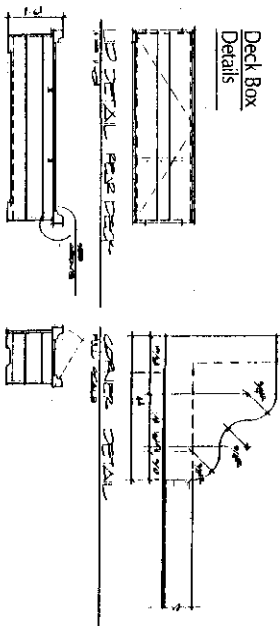
Smoke
Stack
Details



The luxury motor yacht M/V ERSA represents an opportunity for eight (8) additional individuals or corporate entities to join its present owner (making nine total), to share in use of this classic vessel for up to forty-five (45) weeks per year of yachting pleasure forever.

The major expenses incurred in the ownership of a motor yacht of this type and size is not the initial investment but the relatively high yearly operating expenses. Here the benefits of corporate/individual ownership (shared expenses) become obvious and most attractive as these expenses will be equally shared by all nine (9) owners. The yearly operating expenses for this vessel include: The salaries for Captain and Crew, Dockage, Maintenance, Insurance and Fuel.

Deck Box
Details



PORT/STARBOARD SEA OPERATION AREA



PECIFICATIONS

Length	76 Feet
Beam	15.5 Feet
Draft	4.5 Feet
Tonnage	70
Net	48
Fuel Capacity/Range	630 Gallons/400 Miles
Fresh Water Capacity	600 Gallons
Engines	Two General Motors 671 Diesels
Electronics	Raytheon 12 Mile Radar Furuno Color Video Depth Recorder Stev. Logan C
Navigation	VHF Marine Radio Single Side Band Radio/Telephone Cellular Telephone Cable TV Hook-Up Omni Directional TV Antenna
Communications	Two fourteen foot Runabouts W/25 HP Outboards 15 KW and 20 KW Generators New York Yacht Launch & Engine Co. 1929
Excursion Skiffs	1985 - 1988
Generators	Three Staterooms Sleeping Six (Maximum of 8)
Builder	Two Complete Heads With Showers
Year	Masterhead Features Mahogany Spa Washer/Dryer Provided In Stateroom Area
Totally Refurbished/Retrofitted	Captains Stateroom
Guest Accommodations:	Crew Stateroom Sleeping 3 With Full Head
Crew Accommodations:	